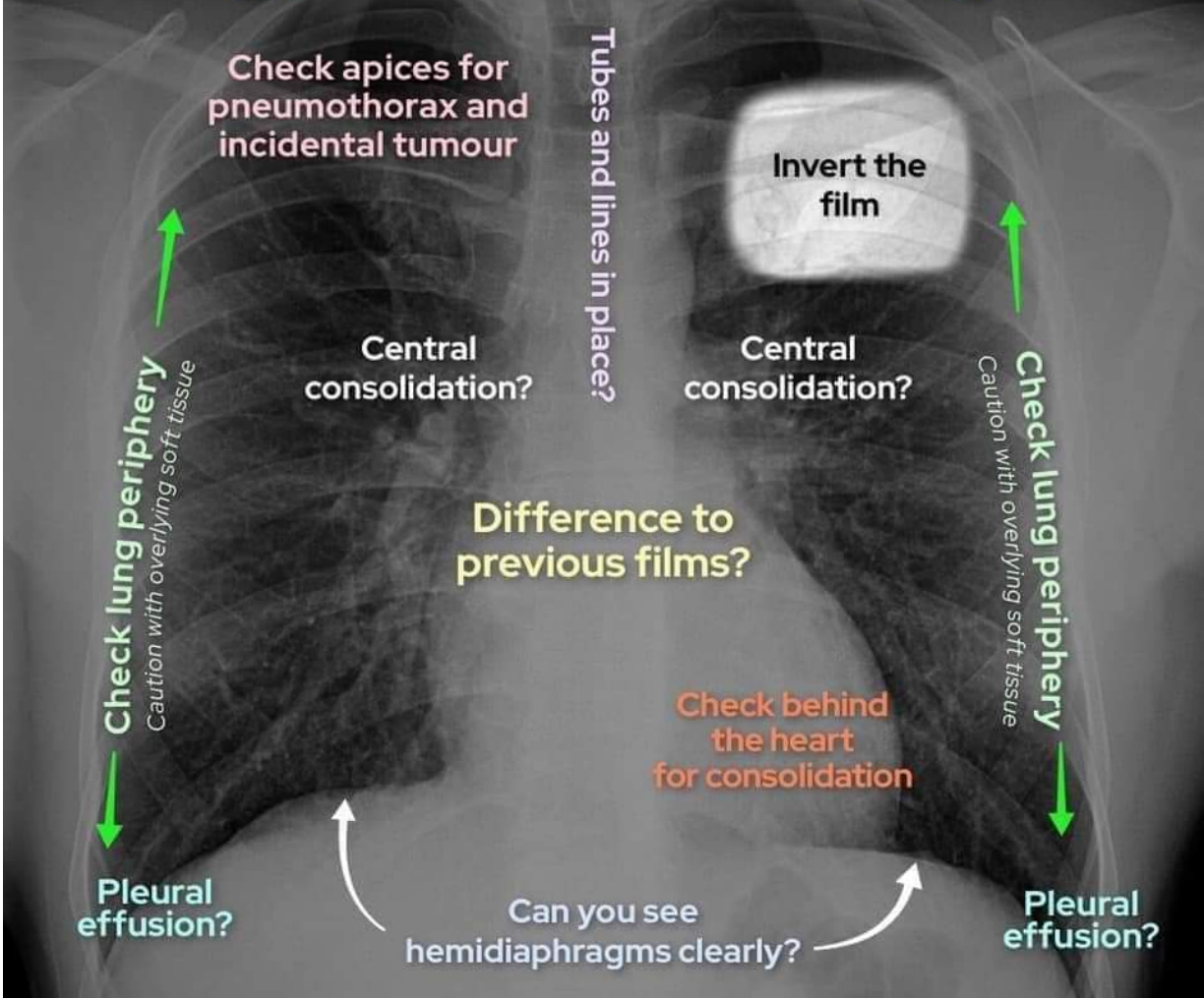
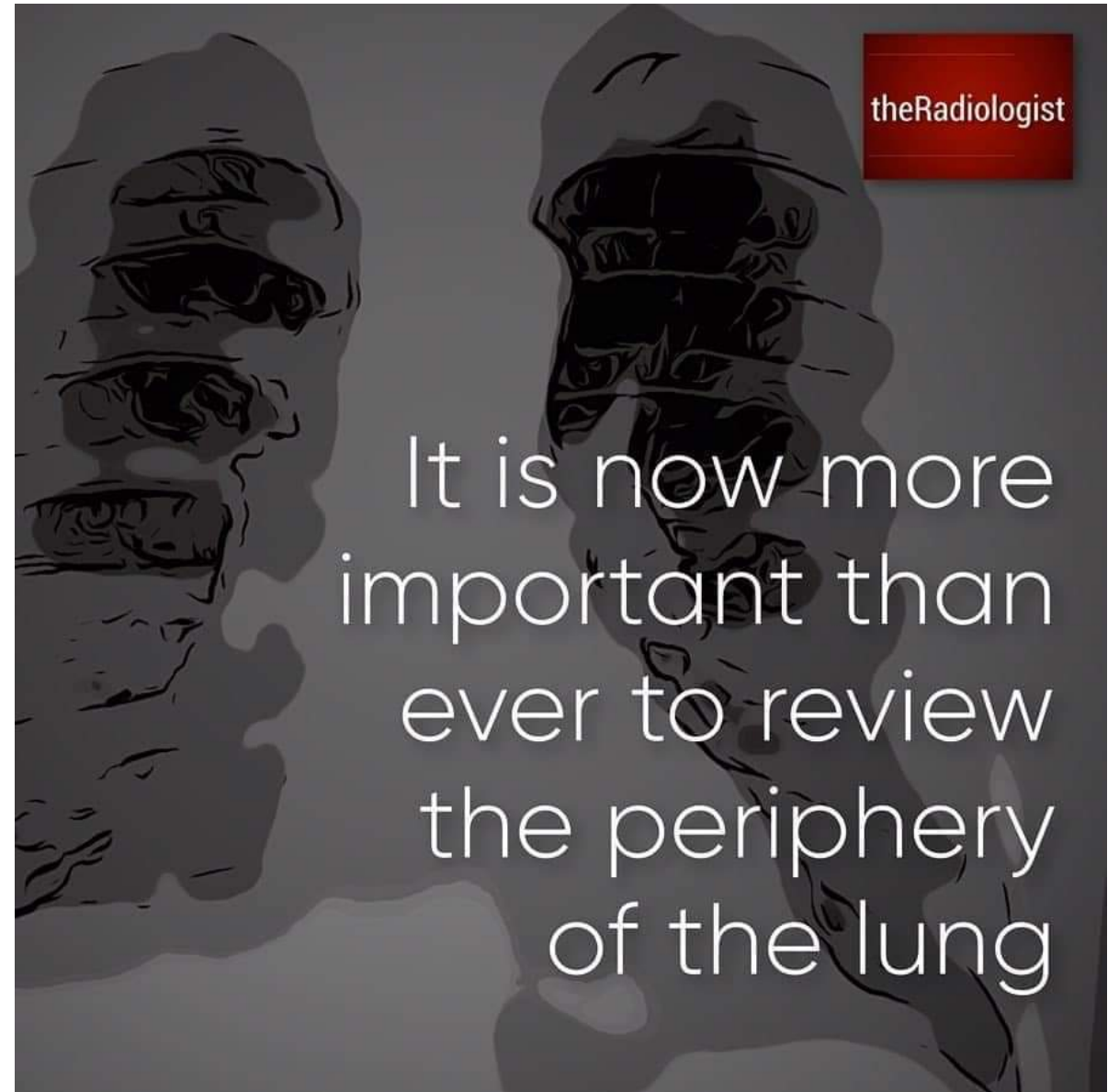
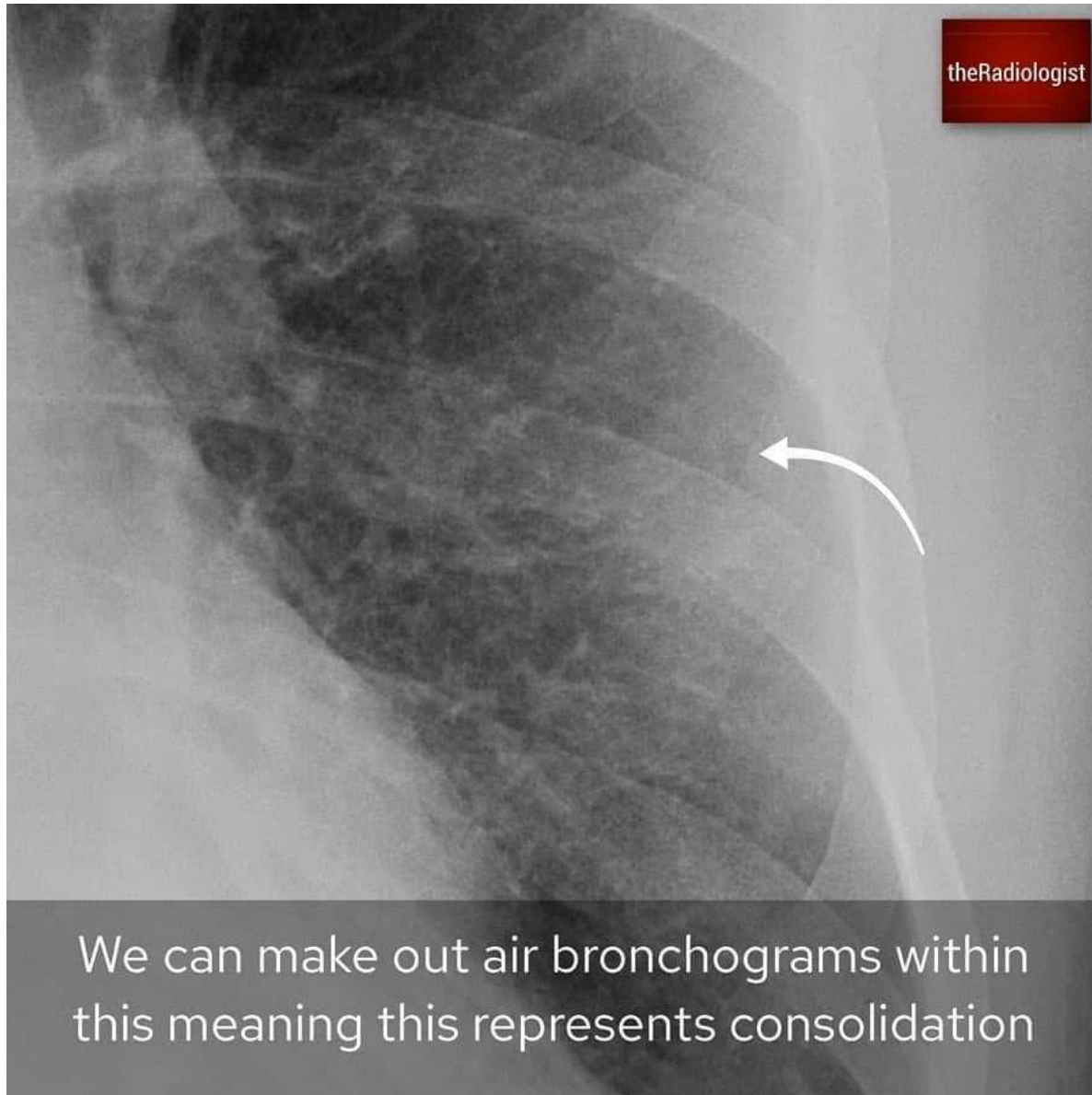


COVID-19 CXR Review Areas

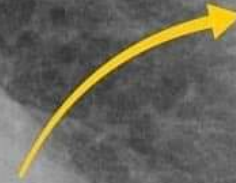


Bilateral peripheral consolidation should make you consider COVID-19 infection

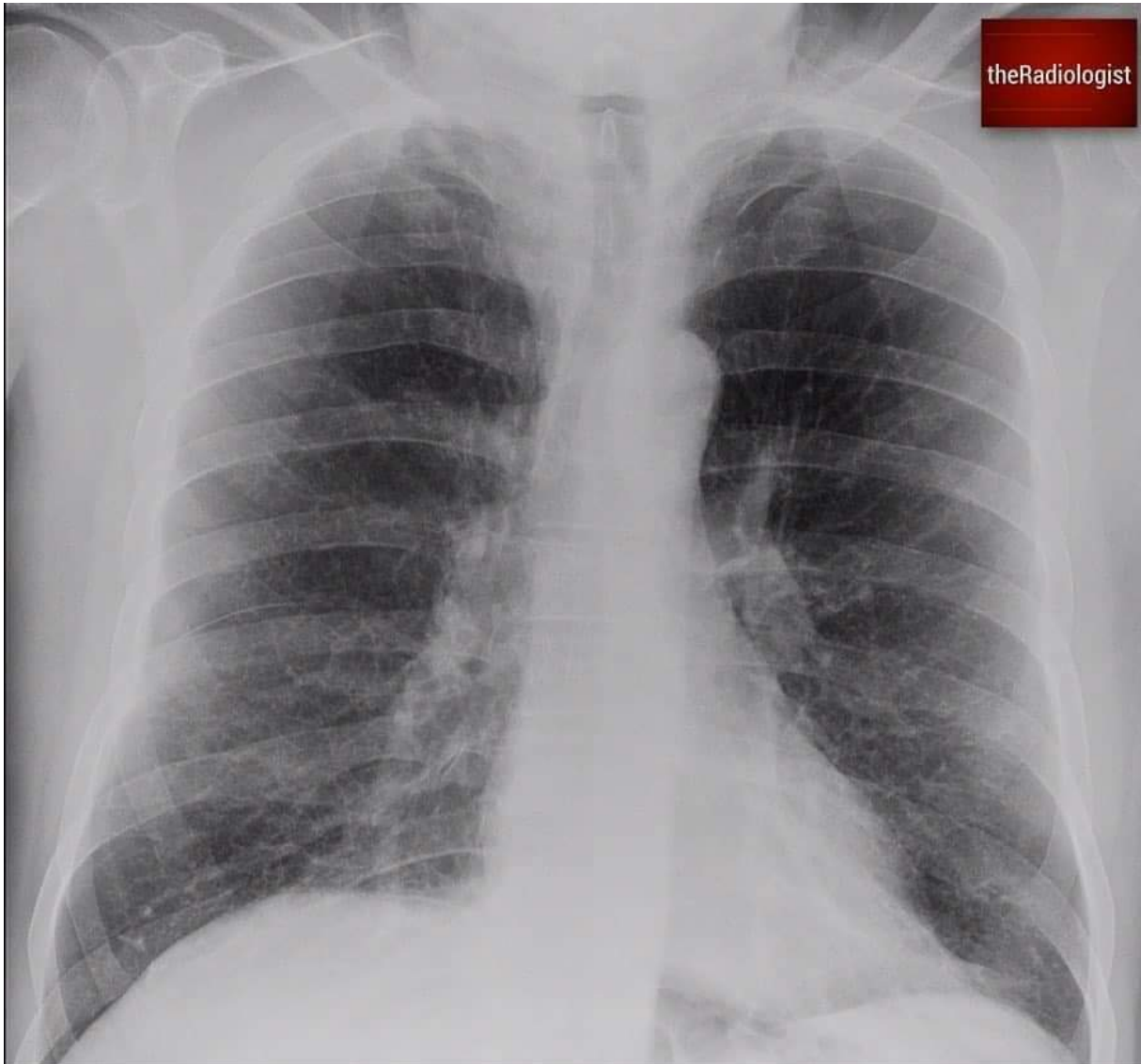




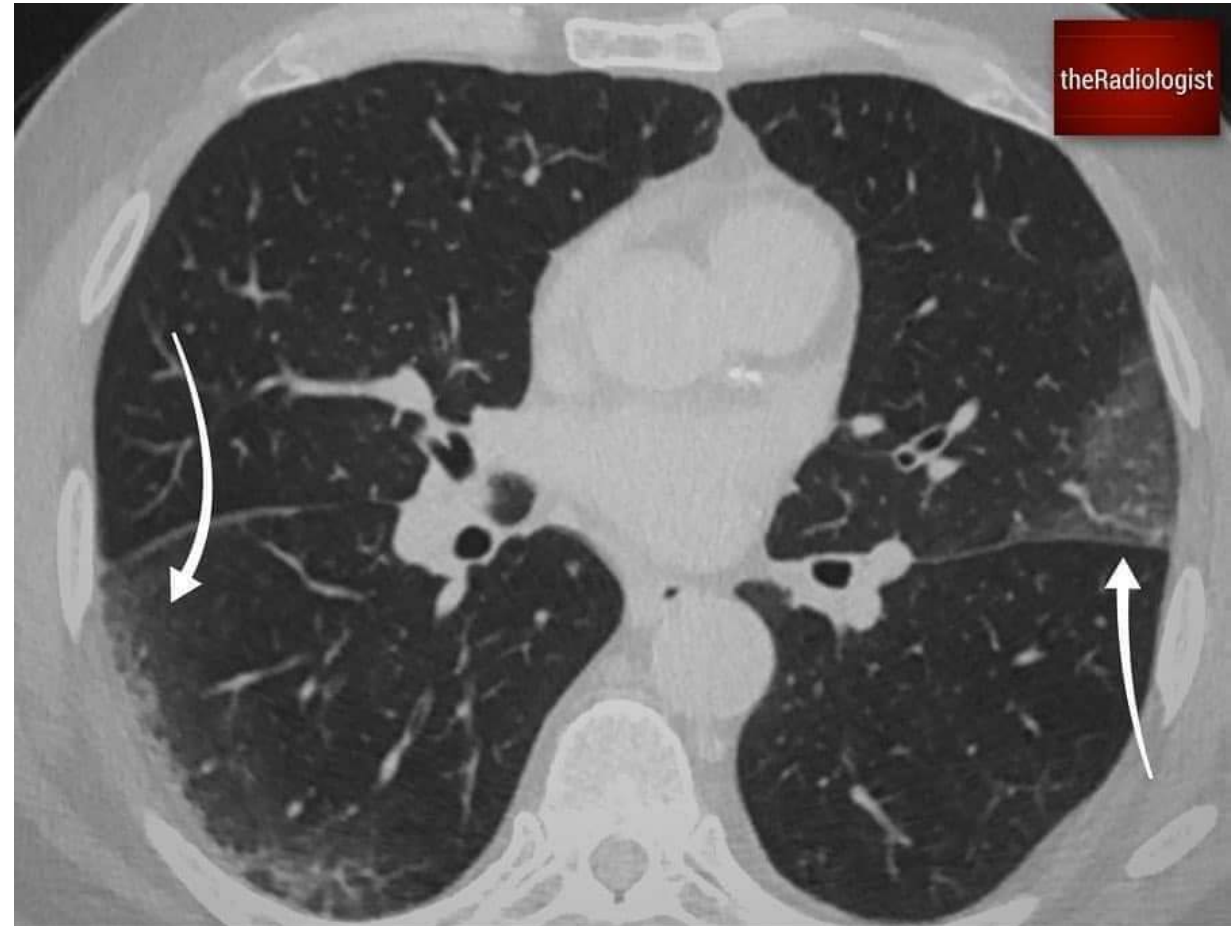
There is similar opacity within the peripheral right mid zone



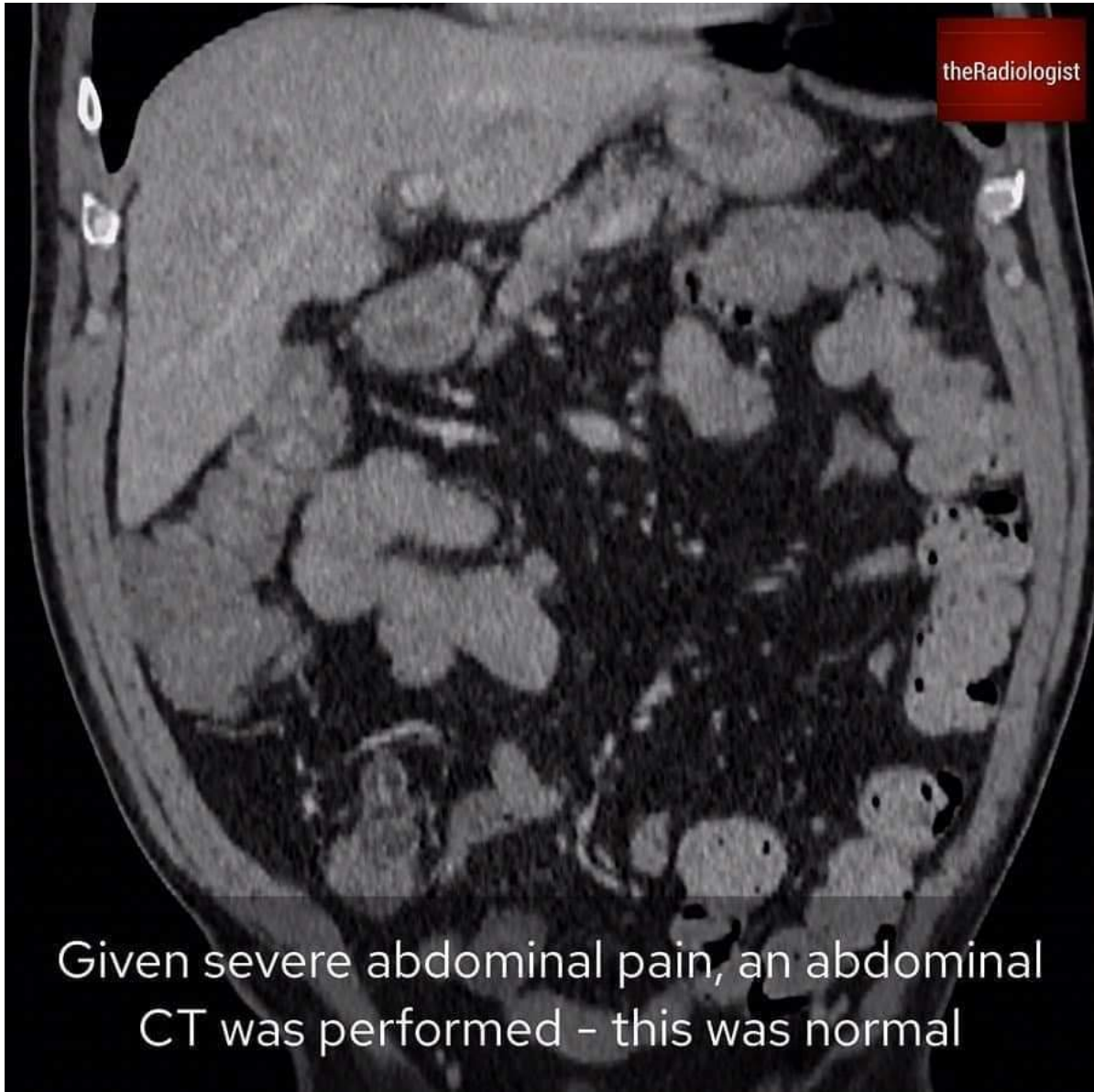
But below this there is increased opacity



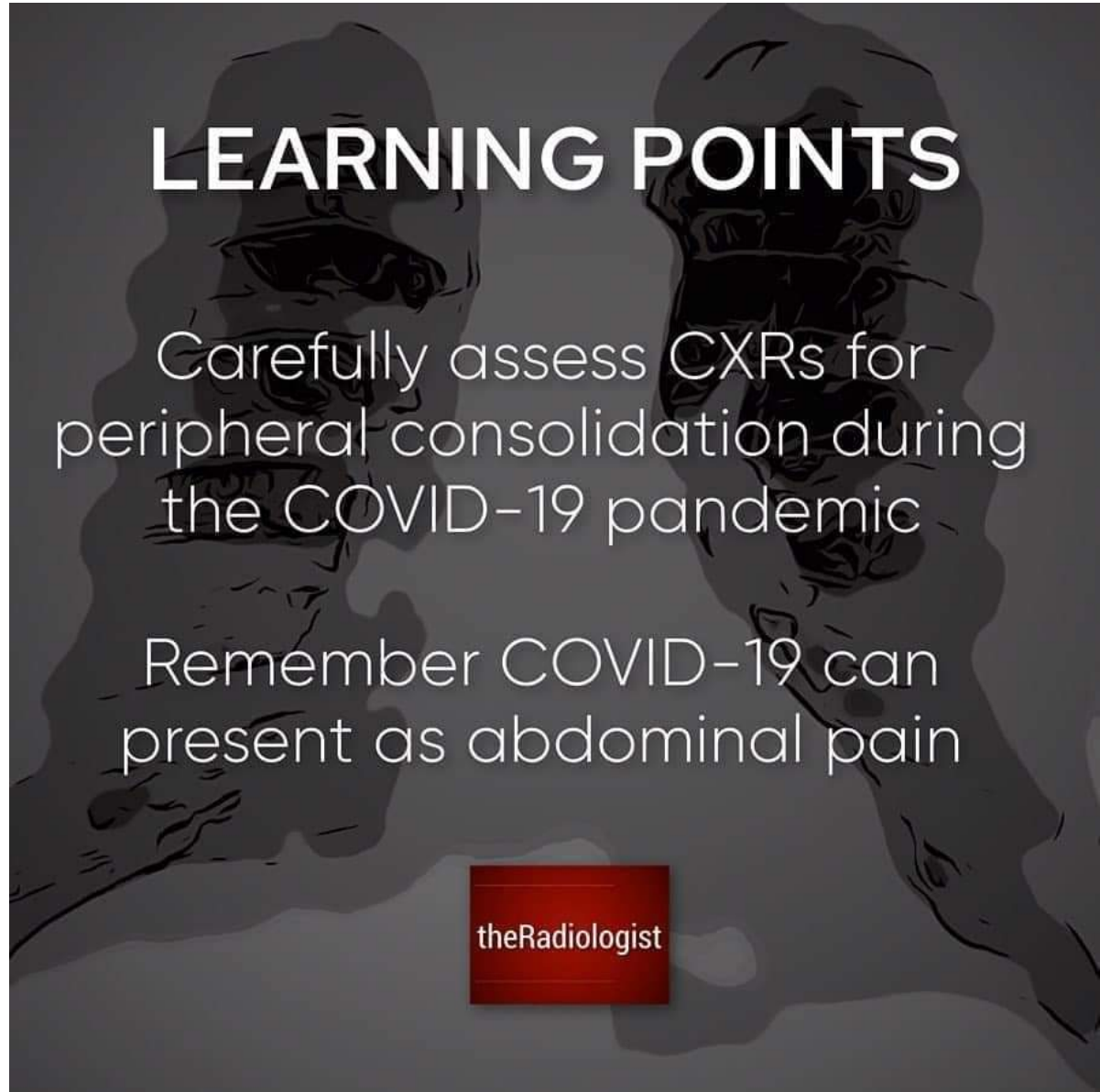
Severe abdominal pain Diagnosis? Swipe for explanation

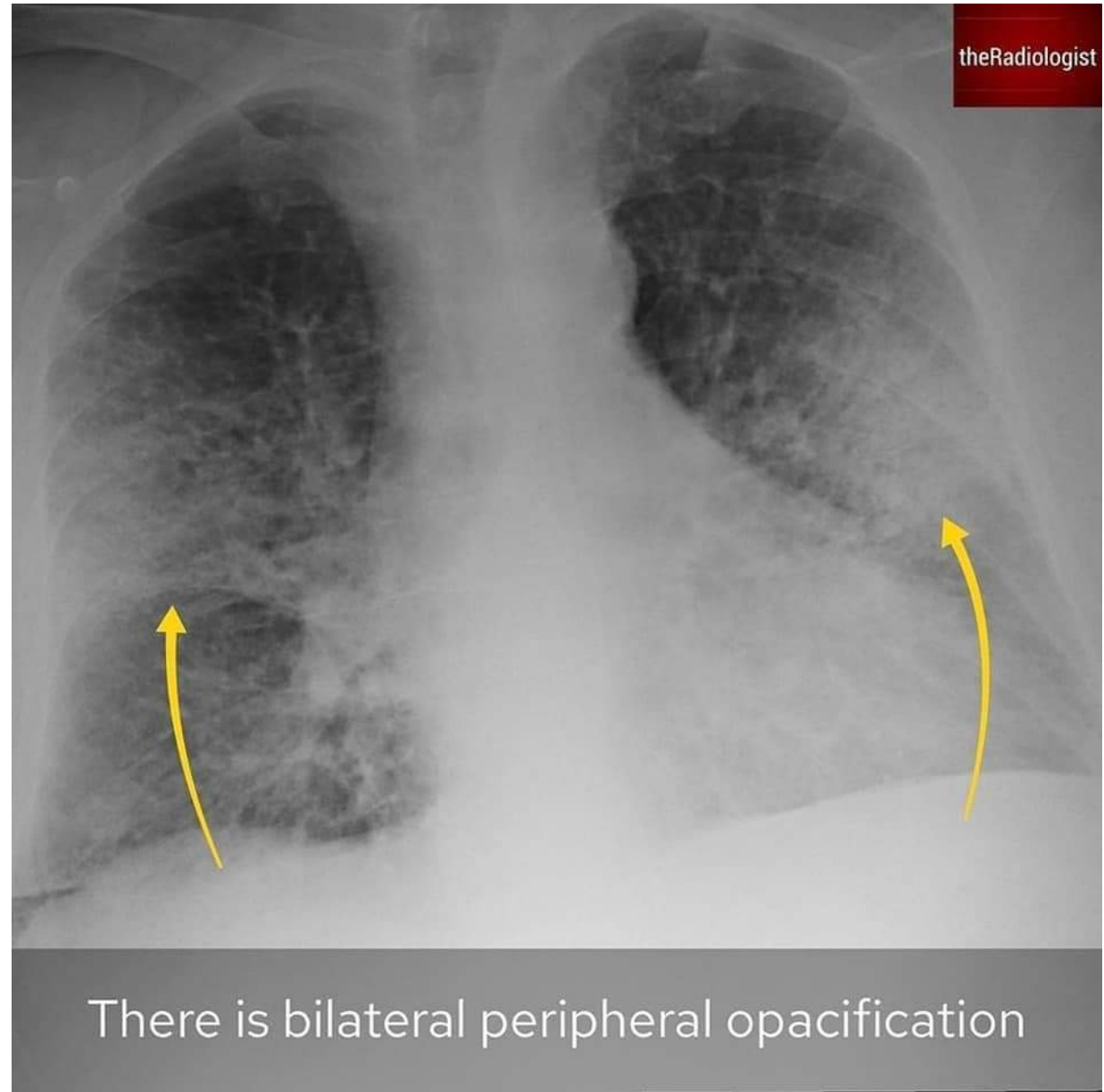
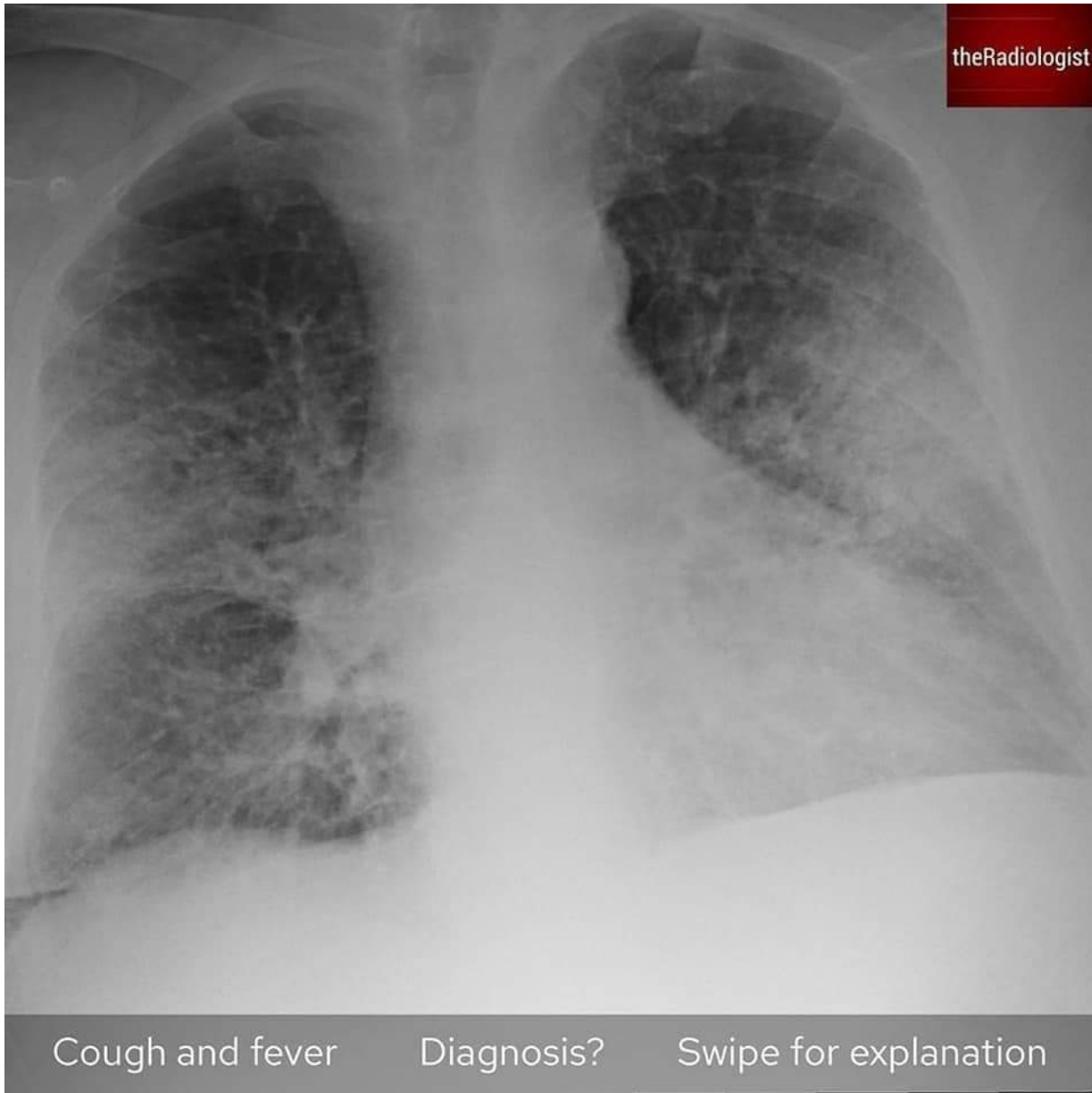


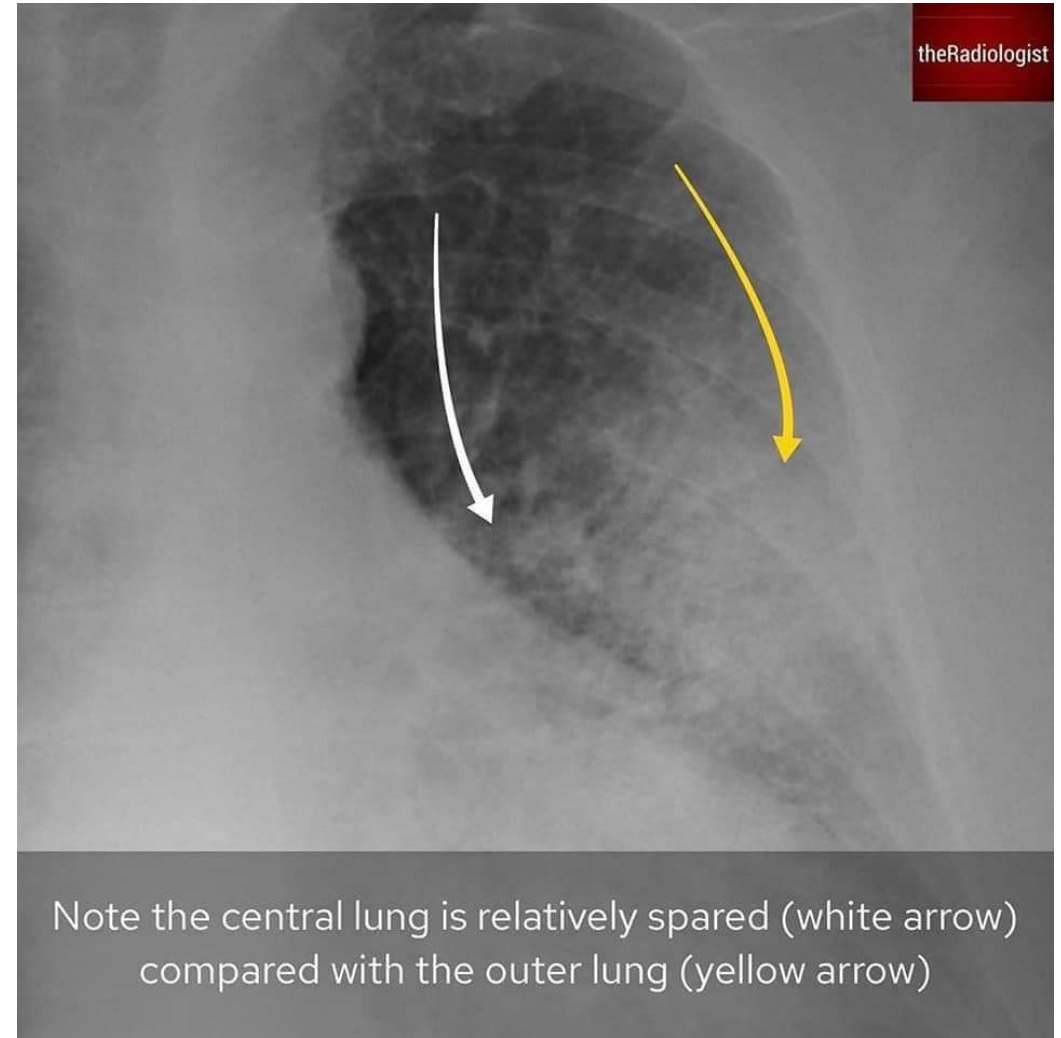
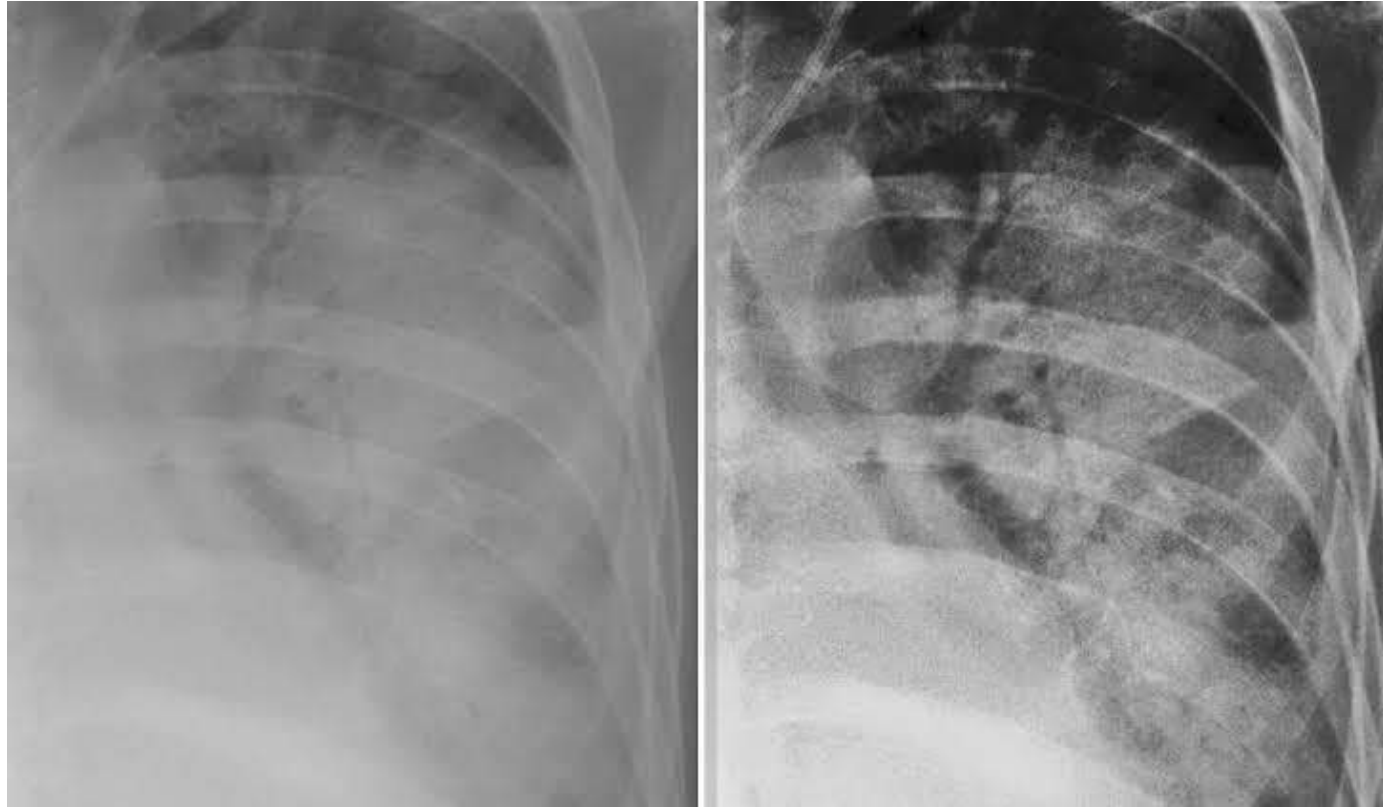
Chest CT confirms the Chest X-Ray abnormality - there is bilateral peripheral ground-glass opacity characteristic of COVID-19



Given severe abdominal pain, an abdominal CT was performed - this was normal





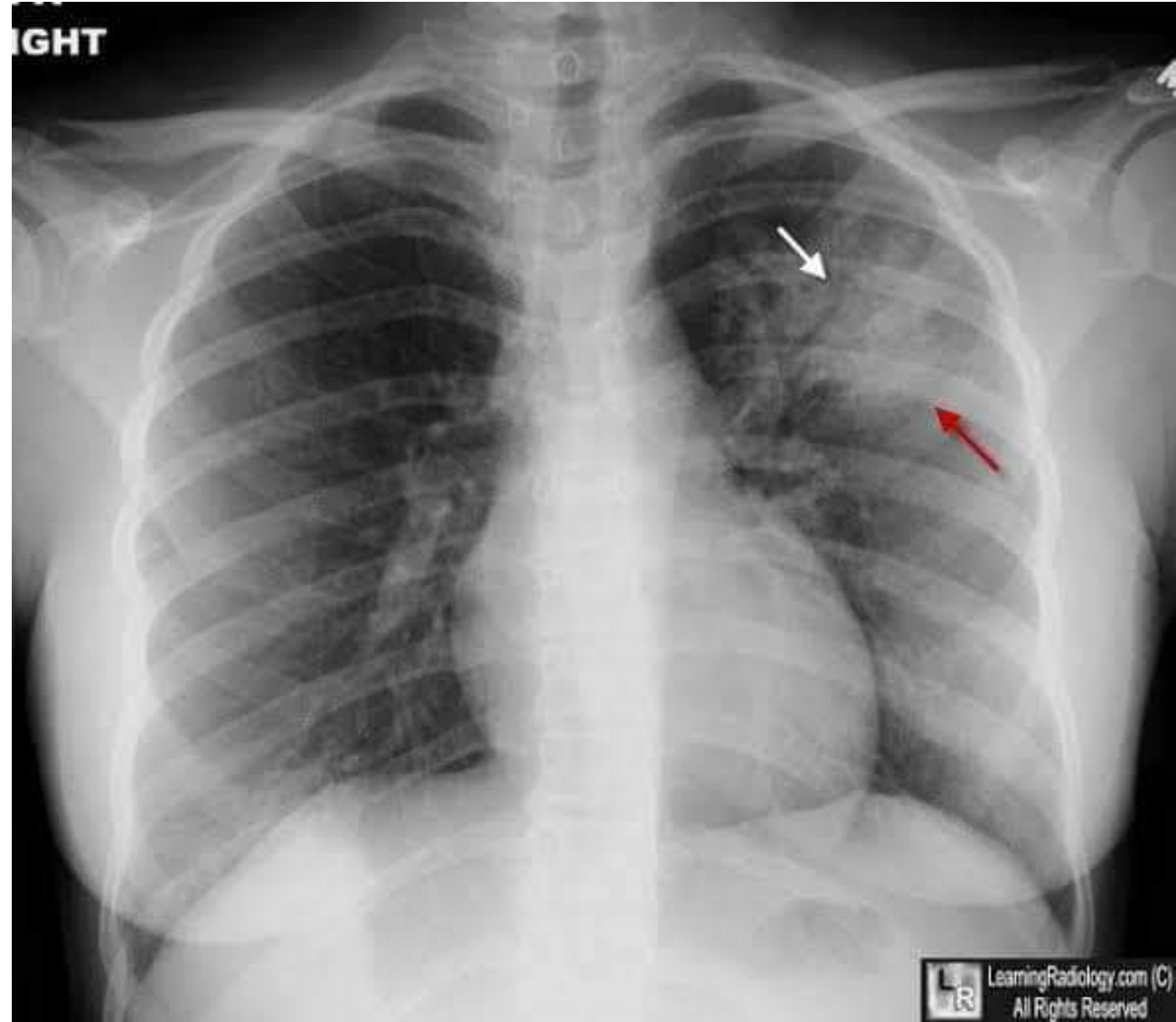


Note the central lung is relatively spared (white arrow) compared with the outer lung (yellow arrow)

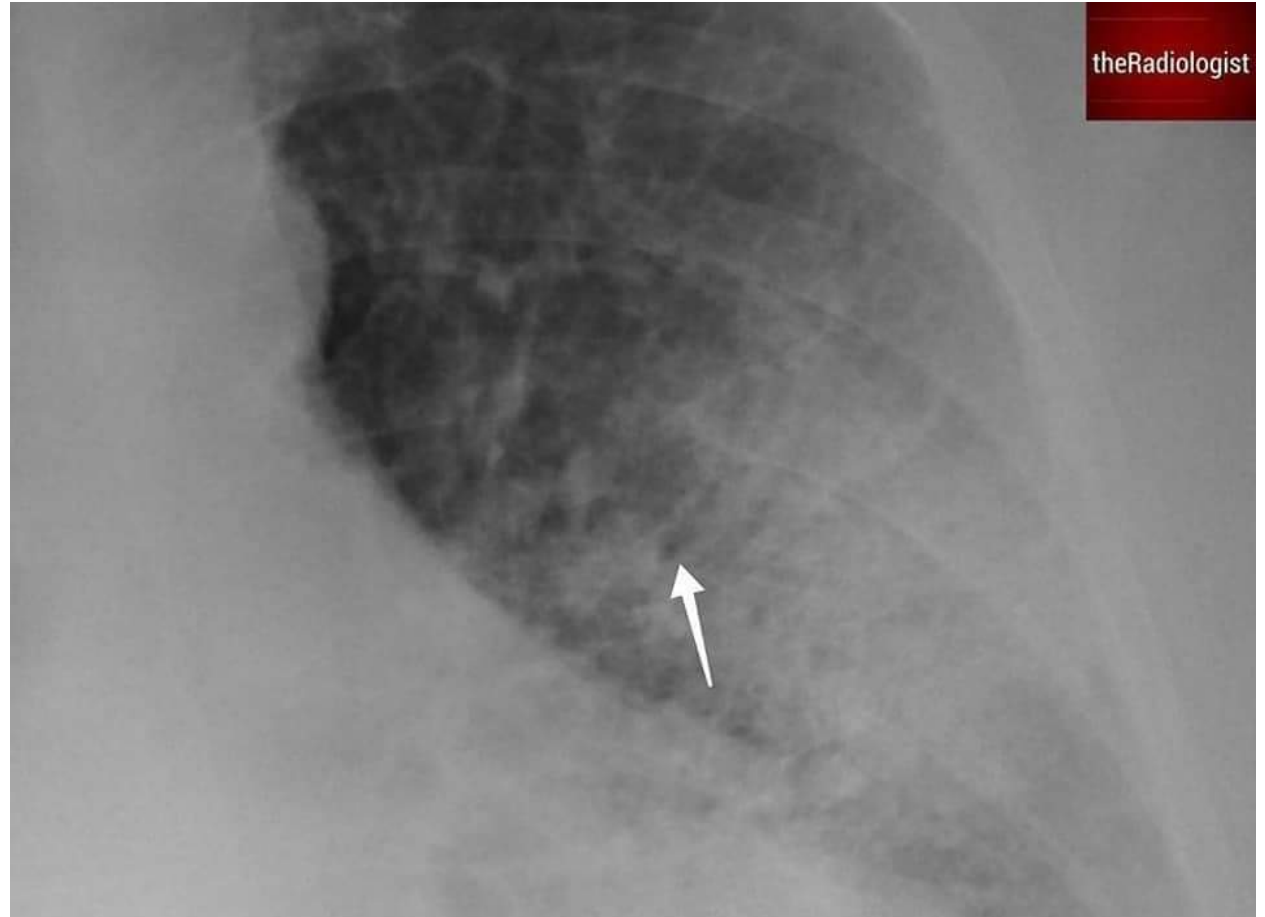
theRadiologist

Bilateral peripheral
consolidation should now
make you consider

COVID-19



<https://www.instagram.com/theradiologistpage/?hl=id>



Look at these small lucencies within the opacification - these are 'air bronchograms'

This means we can definitely call this consolidation