

# METADATA : ACCESS AND AUTHORITY CONTROL

KIKI FAUZIAH, M.HUM.

# ACCESS

**Access point** need to be expressed consistently from record to record when several different records use the same word or name as an access point.

The rest of the metadata world has also begun to see a need for access points either with consistent form from record to record or with links to resources that identify a person, corporate body, concept, and so forth, uniquely.



# BIBLIOGRAPHIC RELATIONSHIPS

**Barbara Tillett** researched and presented a **taxonomy of bibliographic** relationship :

1. Equivalence relationship
2. Derivative relationship
3. Descriptive relationship
4. Whole-part relationship
5. Accompanying relationship
6. Sequential relationship
7. Shared characteristic relationship

# AUTHORITY CONTROL



**Authority Control** is the result of the process of maintaining consistency in the verbal form used to represent an access point and the further process of showing the relationship among names, works, and subjects.

# AUTHORITY CONTROL

**Goals for authority control** are to assist users:

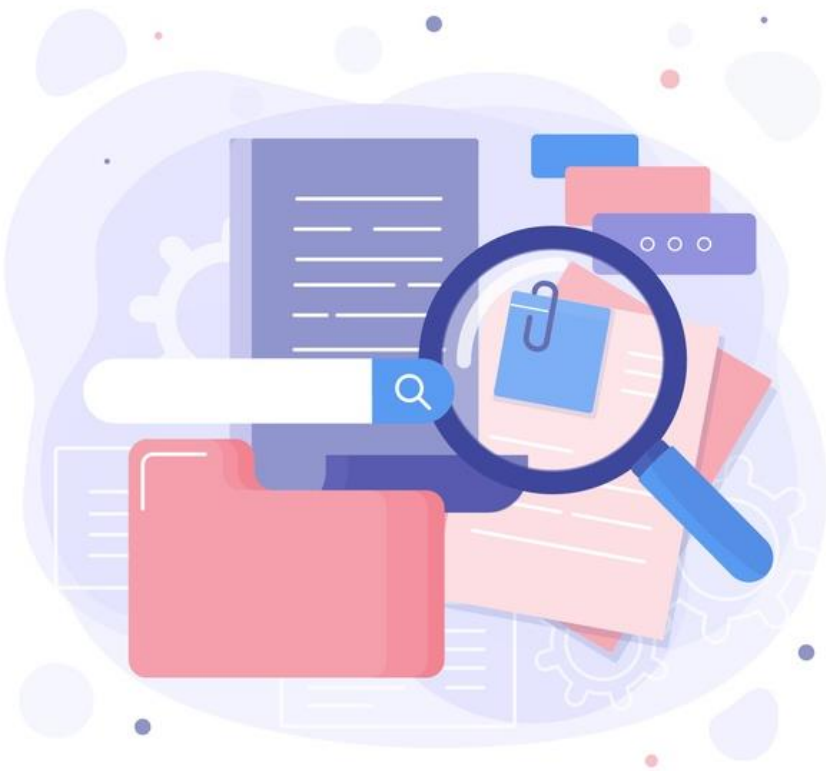
1. To find a creator, a place, a subject or other entity using the searcher's vocabulary
2. To identify
3. To collocate regardless of terminology used
4. To aid in evaluating or selecting
5. To provide synonyms and syndetic structure to aid in subject searching or to provide variant forms of name for persons, families, bodies, or works.

# AUTHORITY WORK



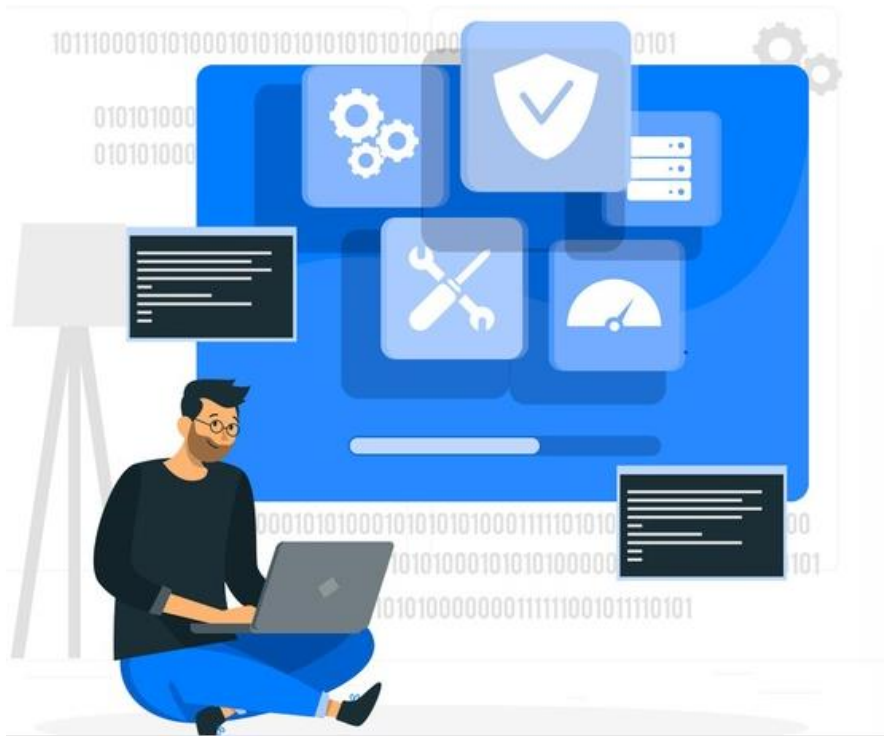
Include identification of relationships of all variant names and titles to their corresponding authorized forms.

# AUTHORITY FILES



**Authority records** are accumulated into an authority file or files, which are separate files from the bibliographic file. Authority files contain metadata for names, works, and subjects.

# MODELS AUTHORITY CONTROL



**Functional Requirements for  
Bibliographic Records (FRBR)**

**Functional Requirements for  
Authority Data (FRAD)**



# STANDARDS AUTHORITY CONTROL



**Anglo-American Cataloguing Rules (AACR)**



**Resource Description and Access (RDA)**



**Dublin Core Agents**



**Metadata Authority Description Schema (MADS)**

# STANDARDS FOR ARCHIVES



**International Standard Archival Authority Record for Corporate Bodies, Persons, and Families (ISAAR (CPF))**



**Encoded Archival Context (EAC)**



**Describing Archives: A Content Standard (DACS)**

# STANDARDS FOR ART AND MUSEUMS



**Cataloging Cultural Objects (CCO)**



**Categories for the Description of Works of Art (CDWA)**



**Visual Resources Association (VRA) Core**



TERIMA KASIH