

Old-World Monkey



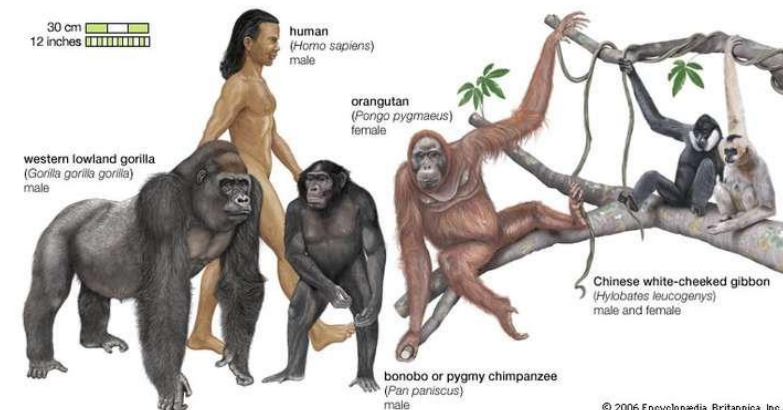
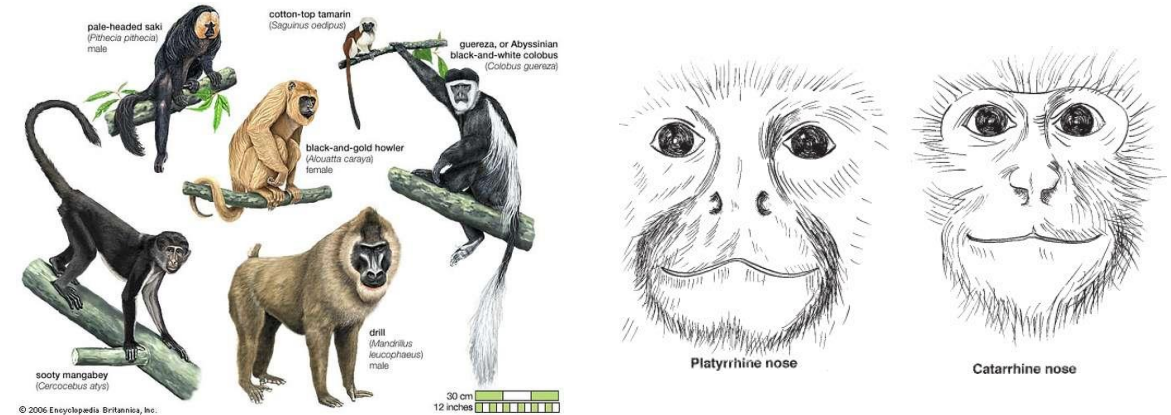
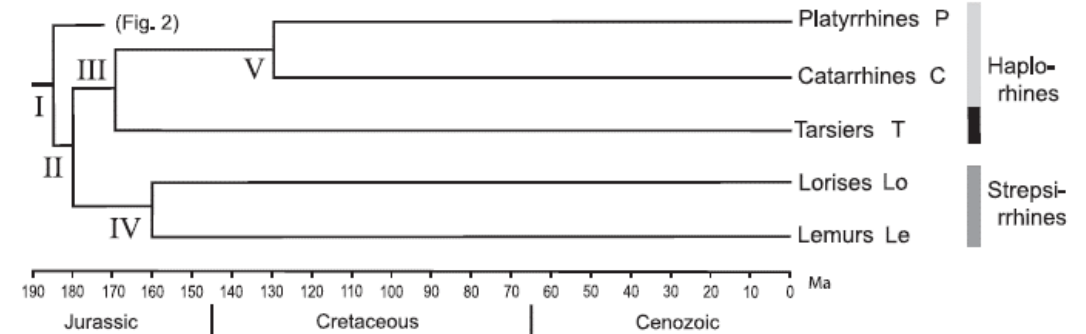
UNIVERSITAS
INDONESIA

Veritas, Probitas, Iustitia

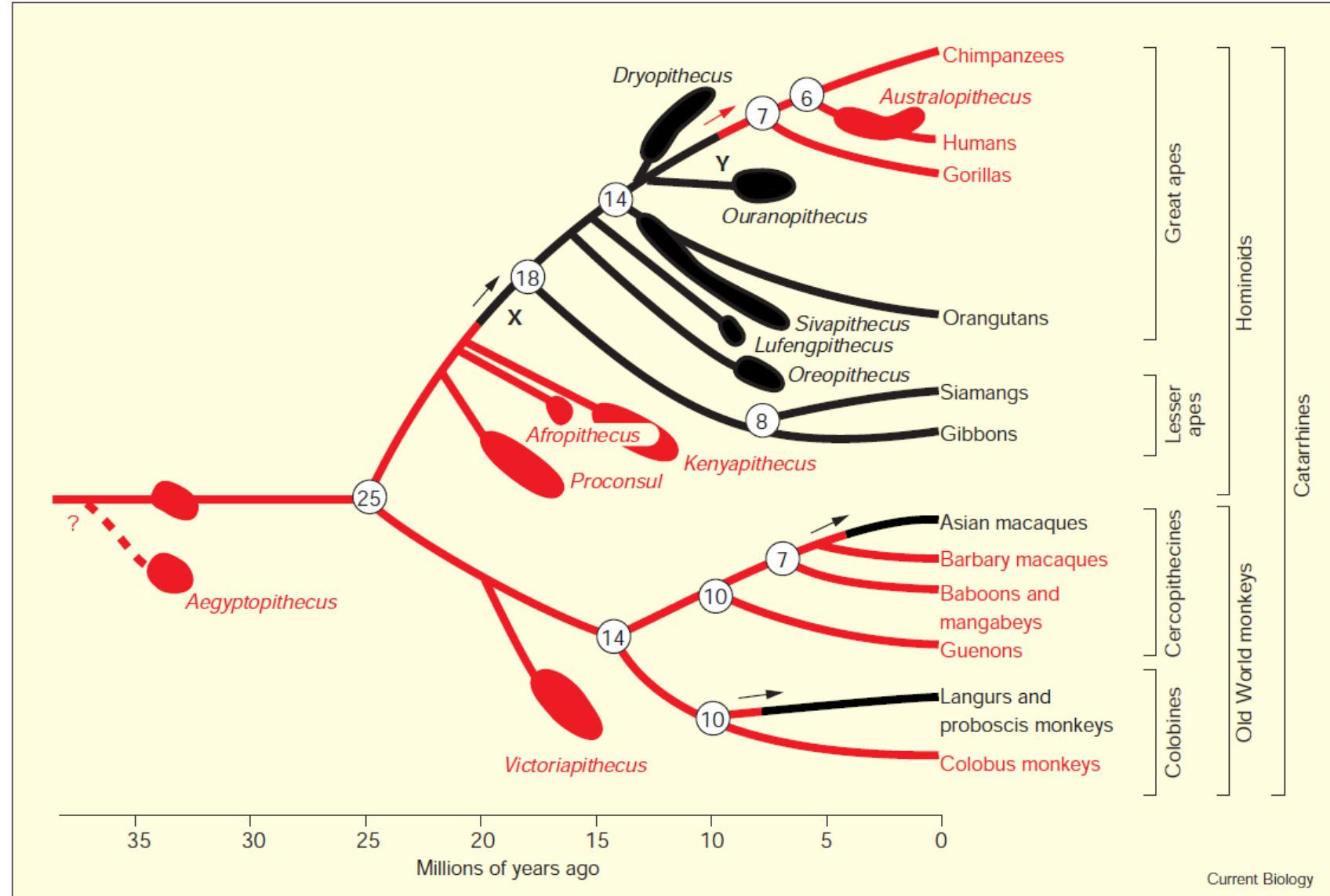
FMIPA
BIOLOGI

The Catarrhine Primates

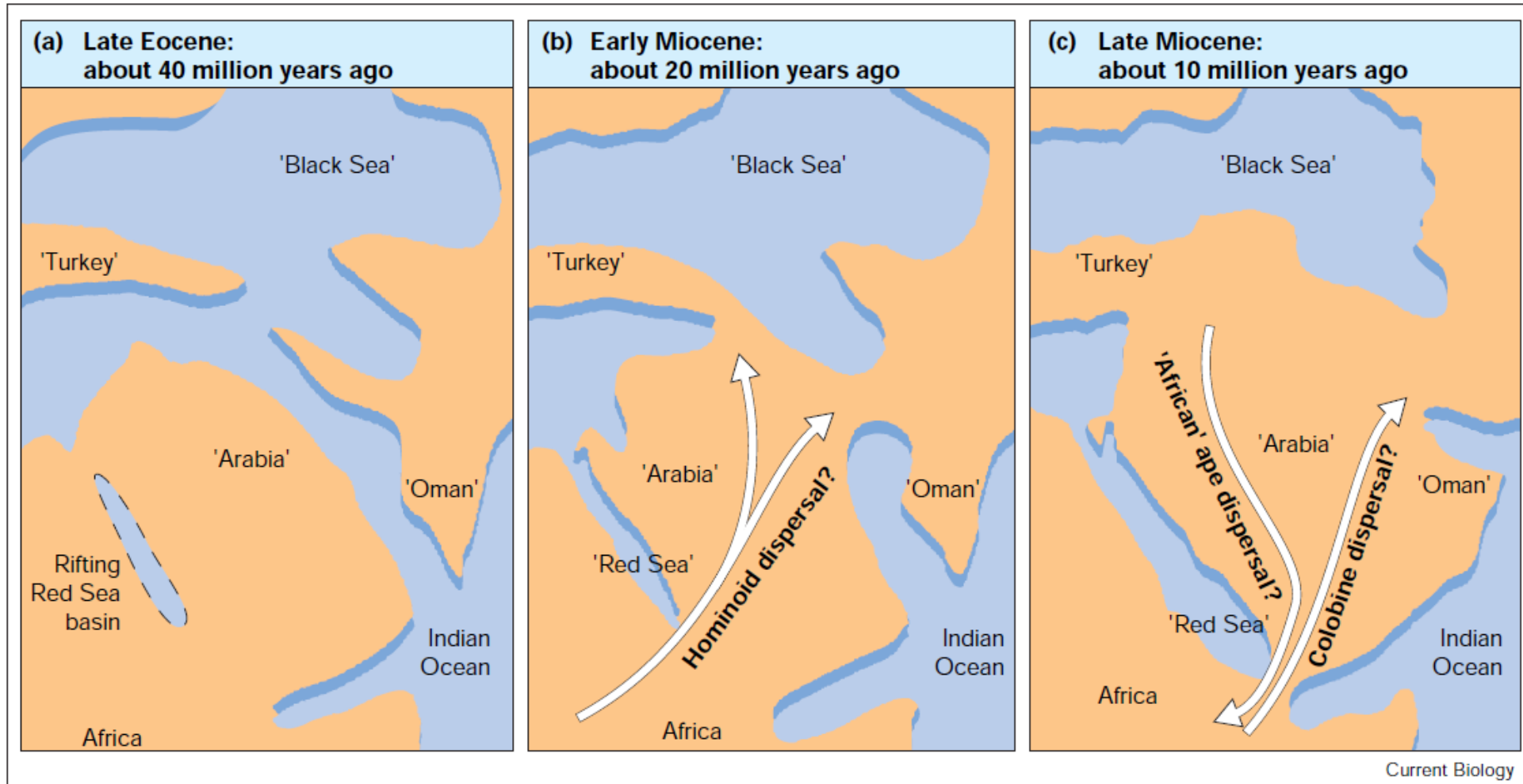
- The hominoids — apes and humans — and Old World monkeys.
- With the exception of humans, the catarrhines are native to Africa and south-eastern Asia, but the fossil record indicates that apes and monkeys were also present in Europe and western Asia during the Miocene, from about 5 to 17 million years ago.

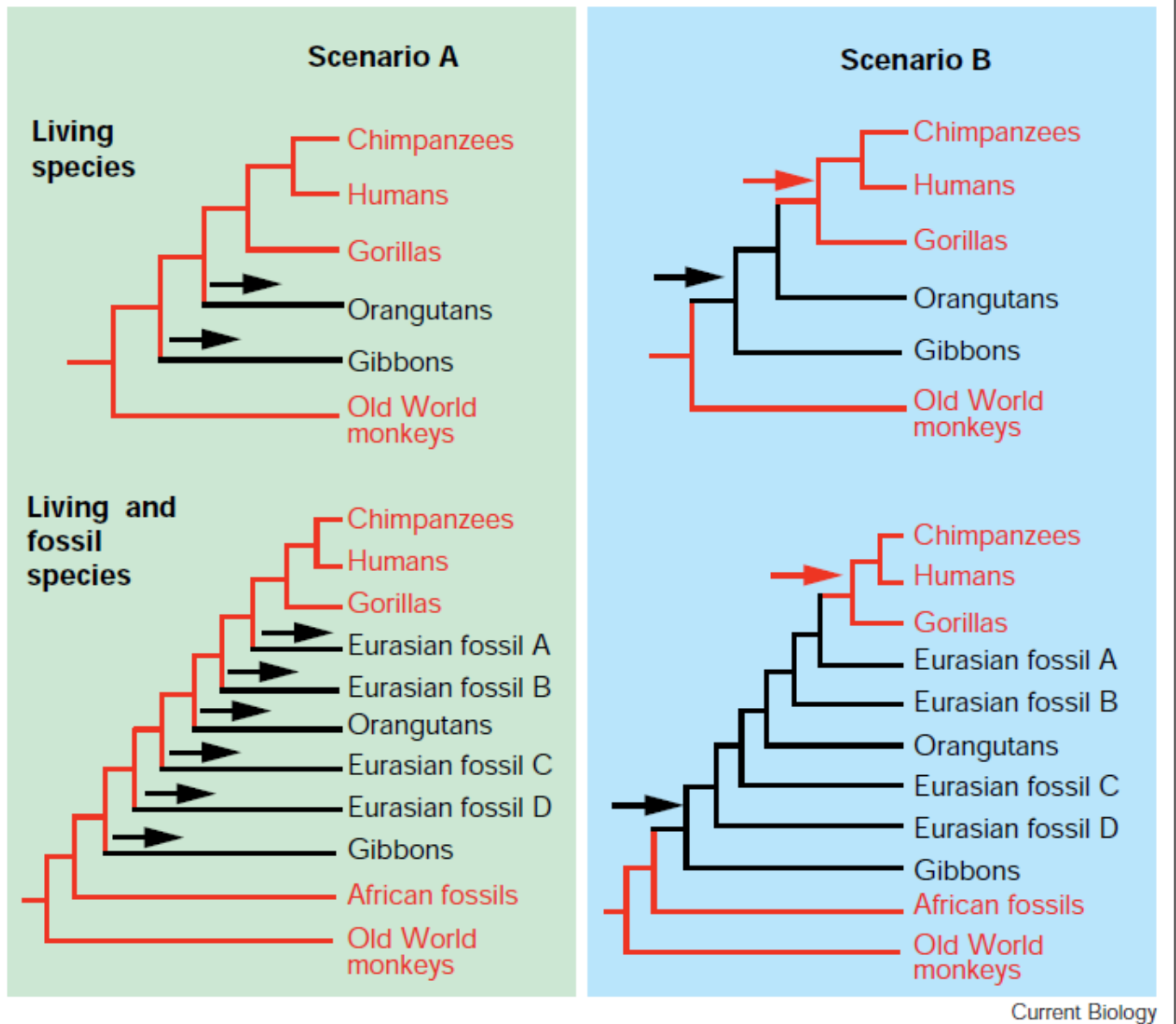


Hypothesis of Catarrhine Primate Evolution



Locations and Environments of The Various Land Bridges Between Africa and Eurasia





Two Dispersal Scenarios for the Catarrhines

The Distribution of Extant Catarrhines



Cercopithecoidea



Macaca fascicularis

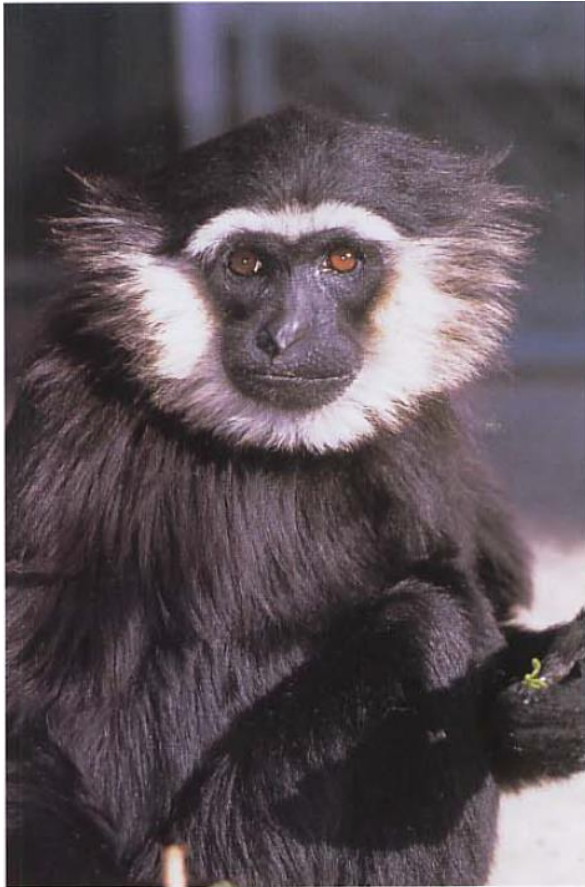


Presbytis comata



Nasalis larvatus

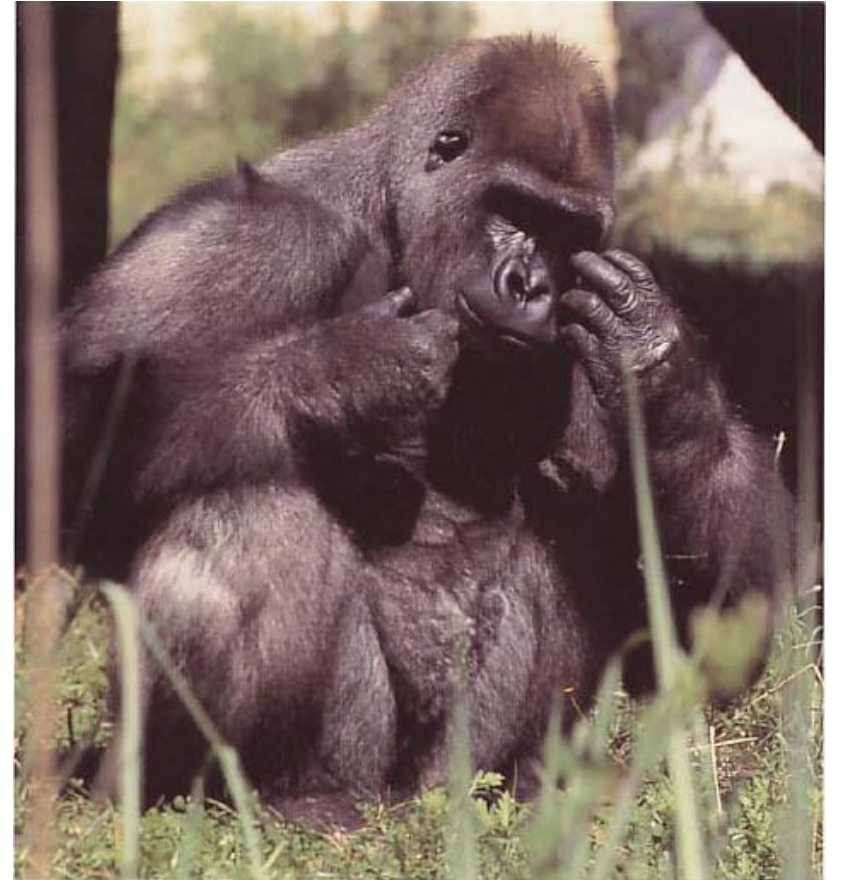
Hominoidea



Hylobates agilis



Pongo abelii



Gorilla gorilla